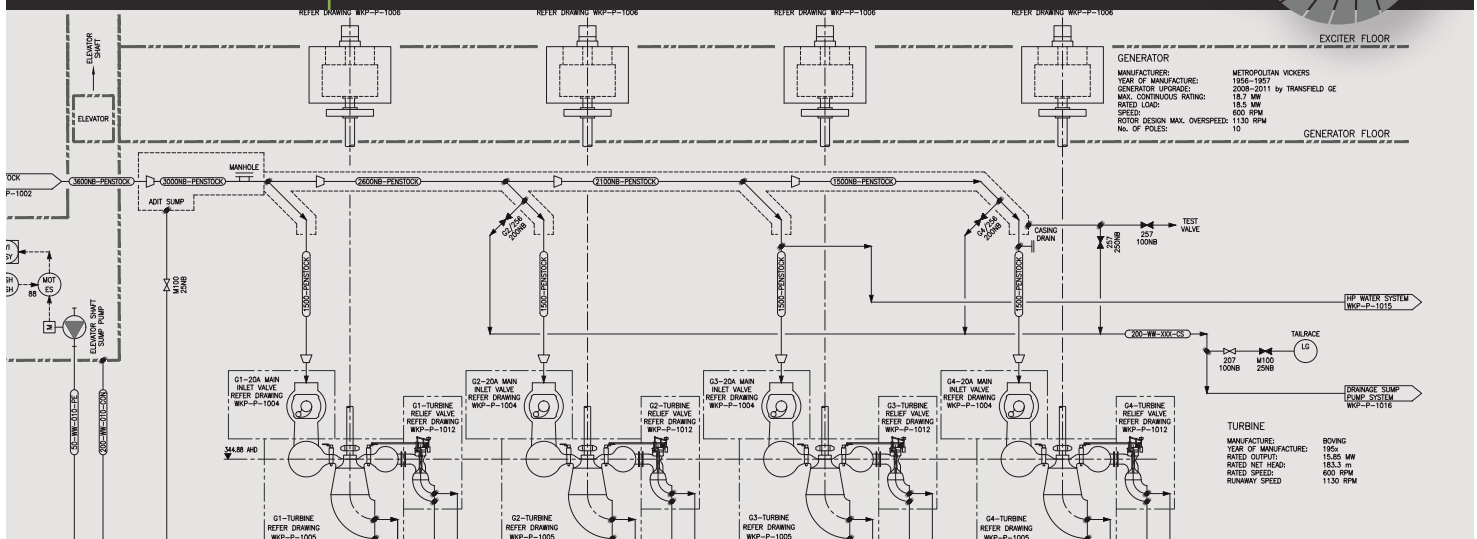


# ASSET OPERATING DOCUMENTATION



**Up to date, accurate and clear Plant Asset Documentation is essential to be able to efficiently and safely manage assets.**

MTL are experienced at preparing Asset Operating Documentation for new and existing plants. MTL provide these services for Clients with critical facilities such as Hydro Power Stations, Geothermal Power Plants and Steamfields, Water Treatment Plants, General Industrial Applications and associated balance of plant.

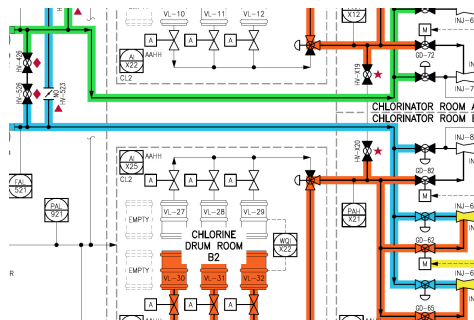
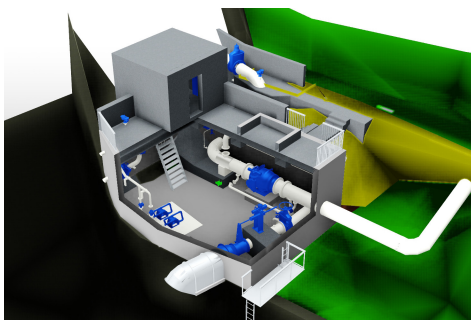
**There are significant, and sometimes unrealised, benefits of producing up to date Asset Documentation.**

They provide a foundation for a robust engineering process for upgrade works, improves understanding of Plant capabilities, results in clearer communication of asset operations/requirements amongst operators and third party contractors. Ultimately health, safety and environmental risks are reduced as a result.

MTL would typically spend time on site liaising with Plant Operators and review existing drawings/documentation to gain a clear understanding of how the specific plant is operated. MTL can tailor documentation to specific Client needs and with a focus on the end users specific knowledge/capabilities.

## KEY SERVICES:

- As-built Process Flow Diagram (PFD) and Piping & Instrumentation Diagrams (P&ID's)
- AutoCAD Plant 3D capabilities featuring integrated P&ID - Plant Models - Engineering Lists
- Customised plant numbering systems (including KKS format)
- Operating and Maintenance Manuals (O&M)
- Standard Operating Procedures (SOP's)
- H&S Plant Isolation Procedures
- 2D or 3D as built documentation (Using 3D laser scanning if required)



HYDRO

GEOTHERMAL

THERMAL

WATER

INDUSTRIAL

[www.mtlnz.co.nz](http://www.mtlnz.co.nz)